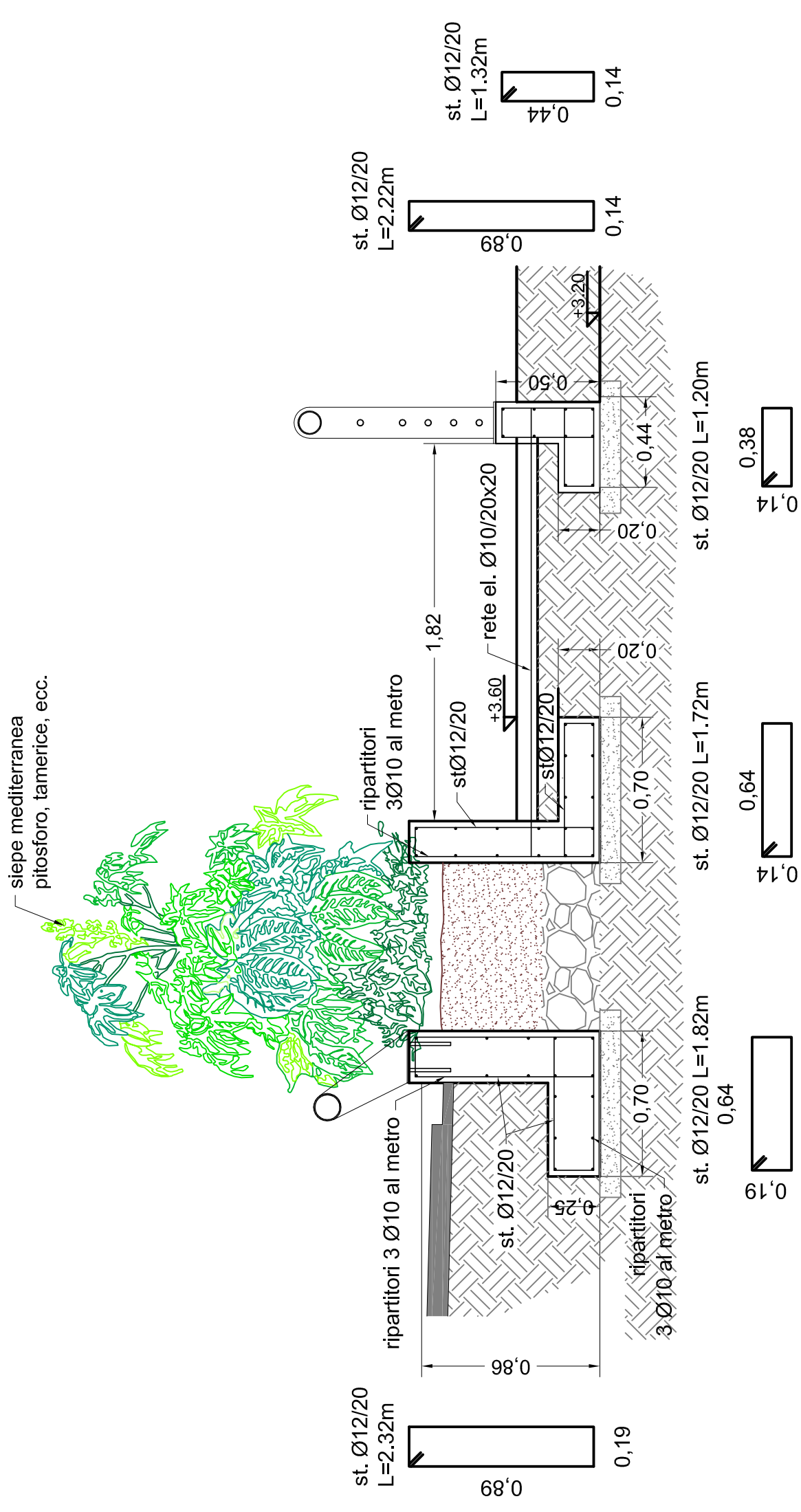
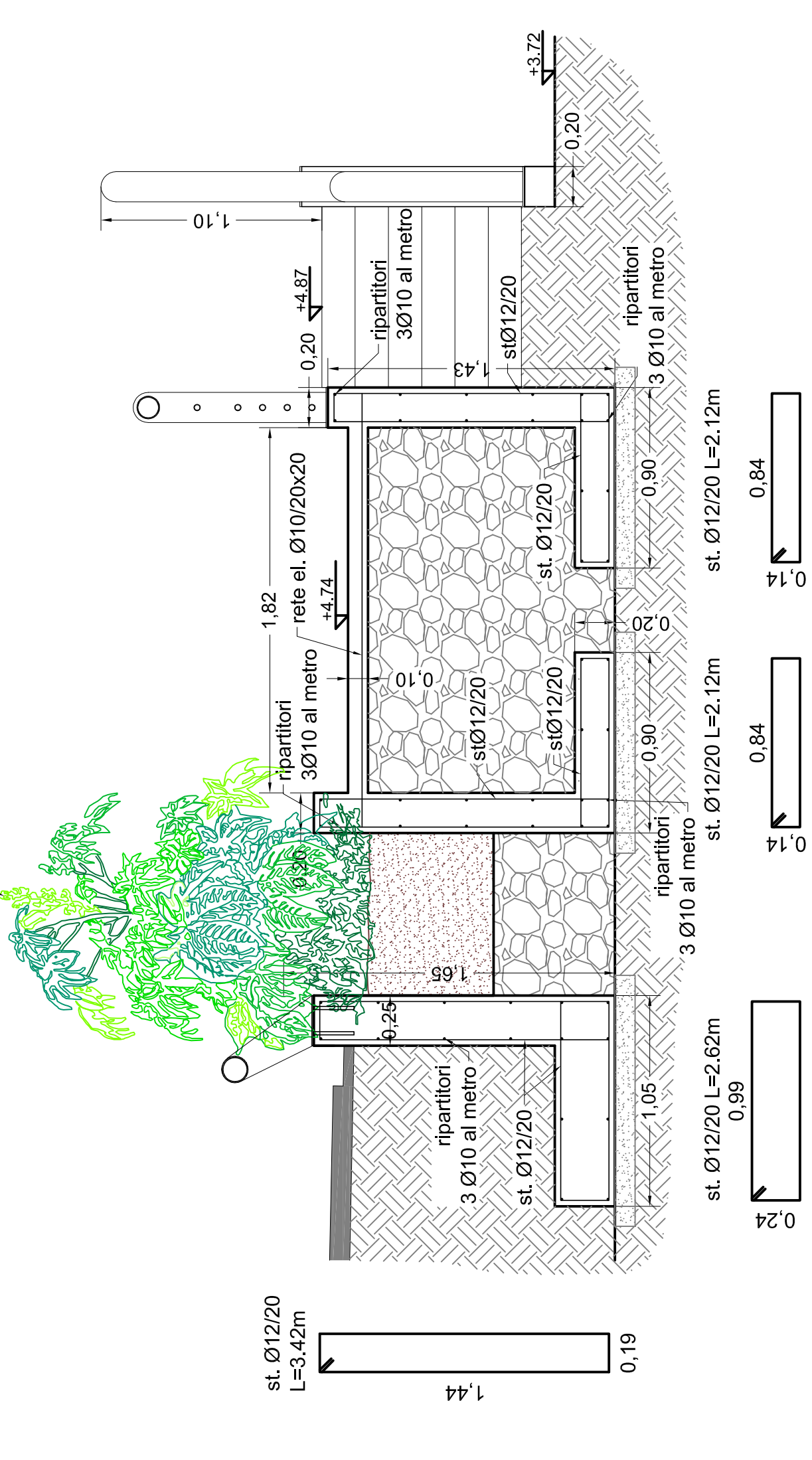


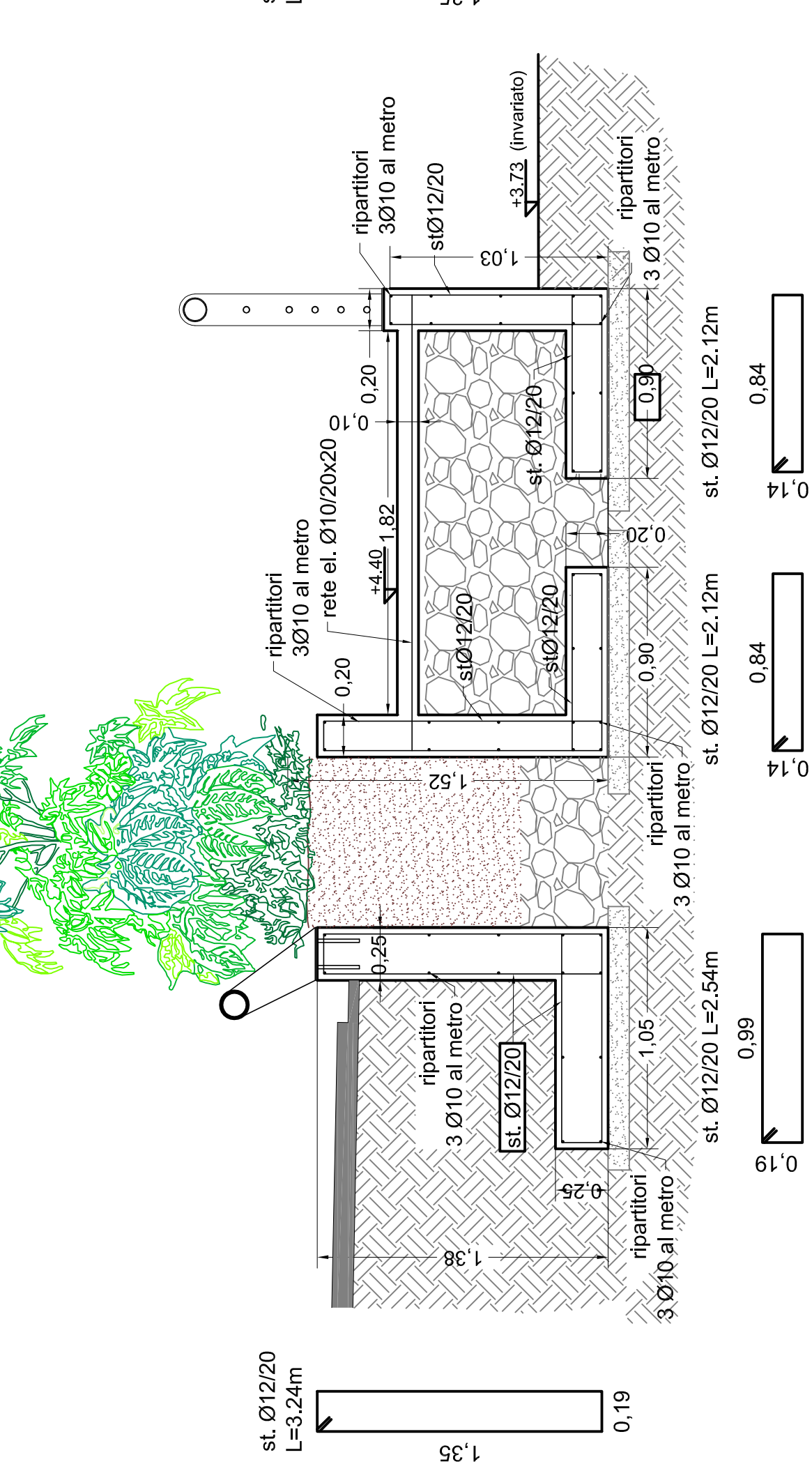
SEZIONE 1-1'



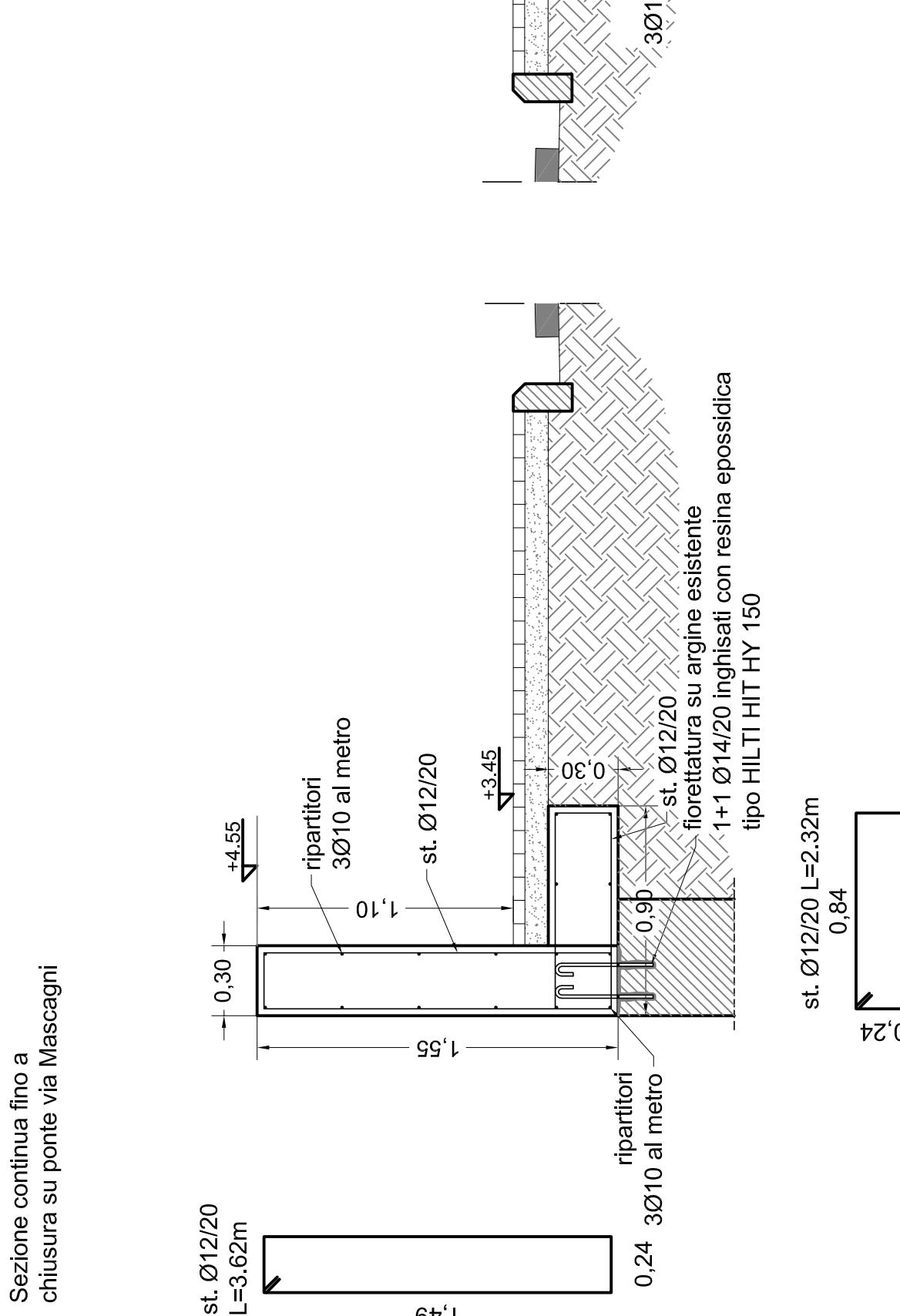
SEZIONE 3-3'



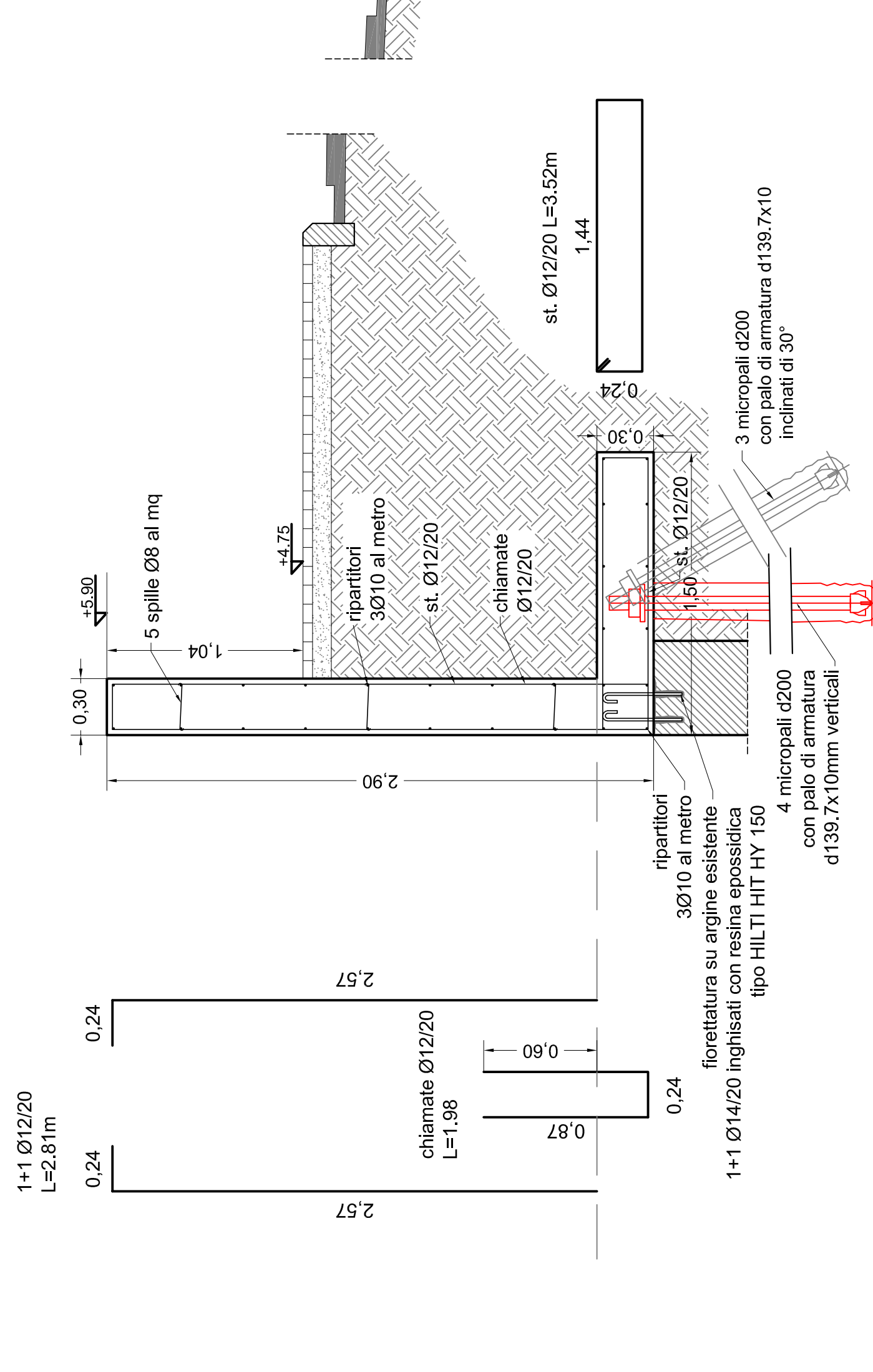
SEZIONE 2-2'



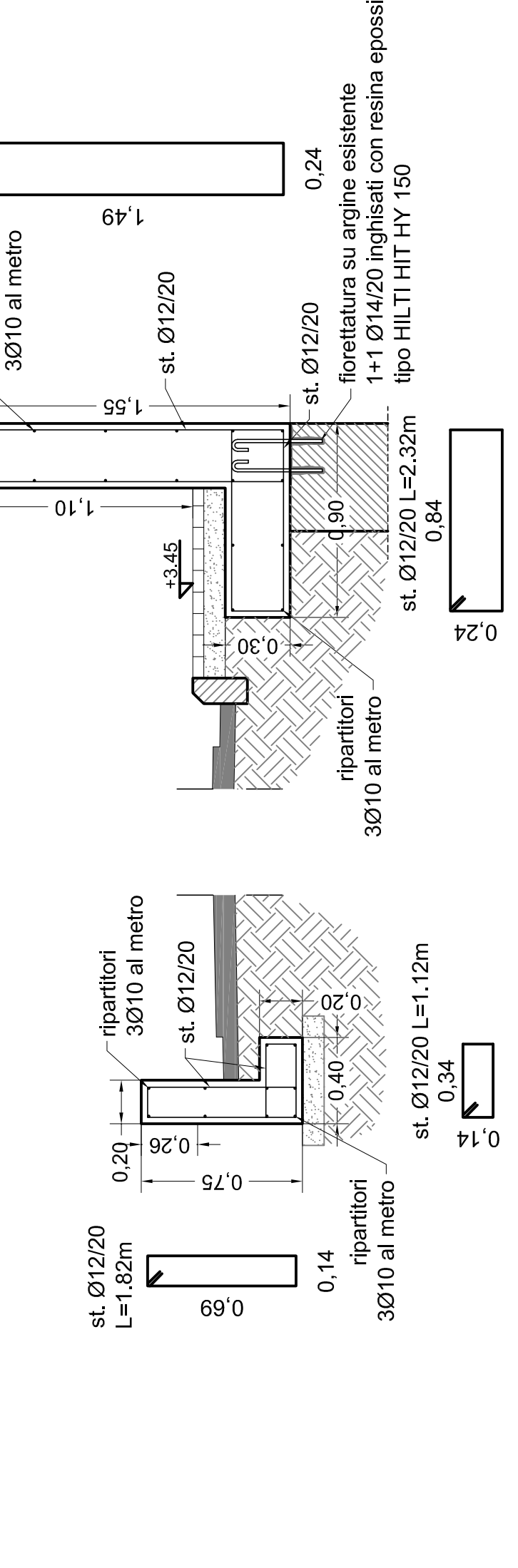
SEZIONE 4-4'



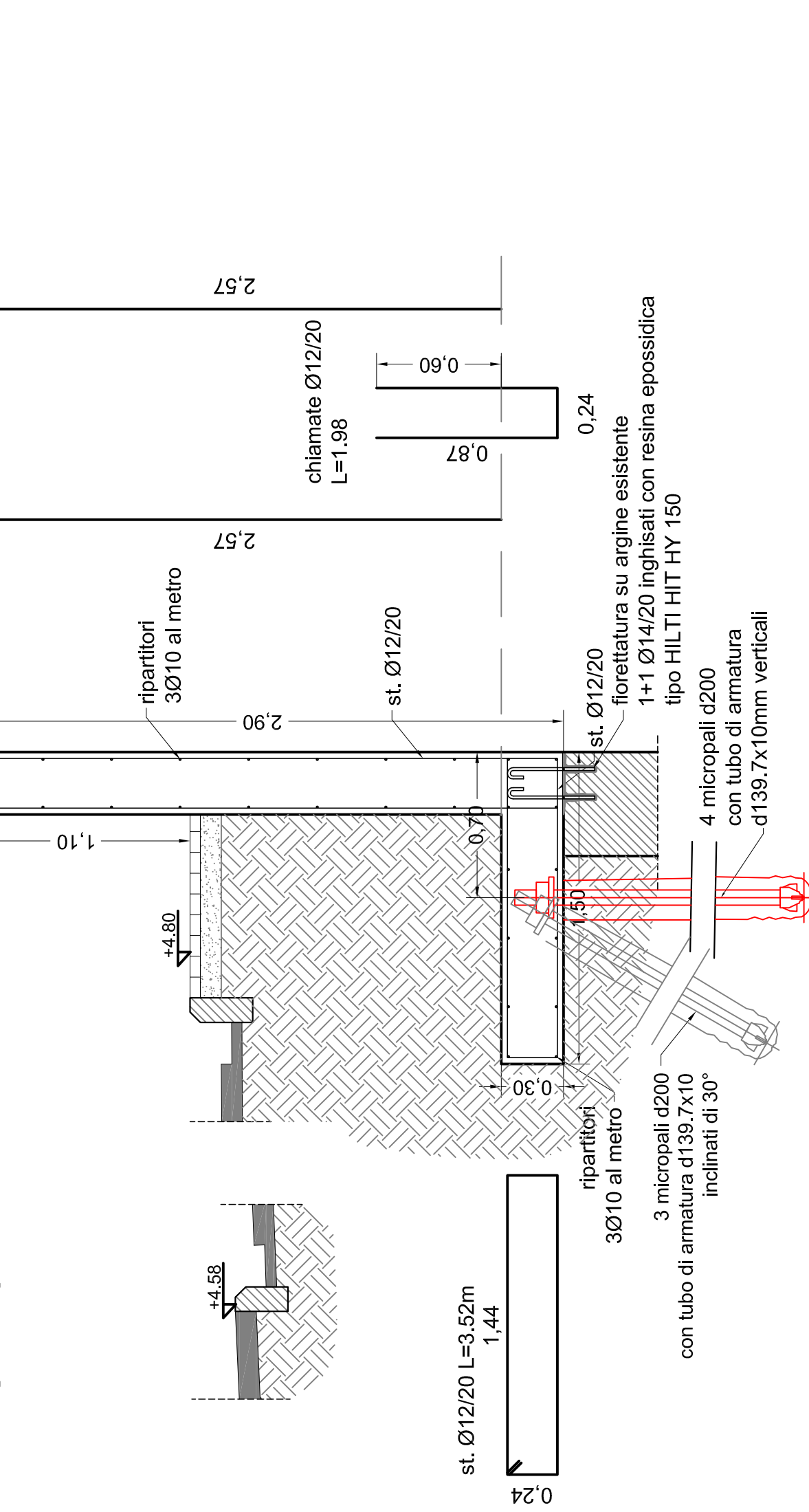
SEZIONE 5-5'



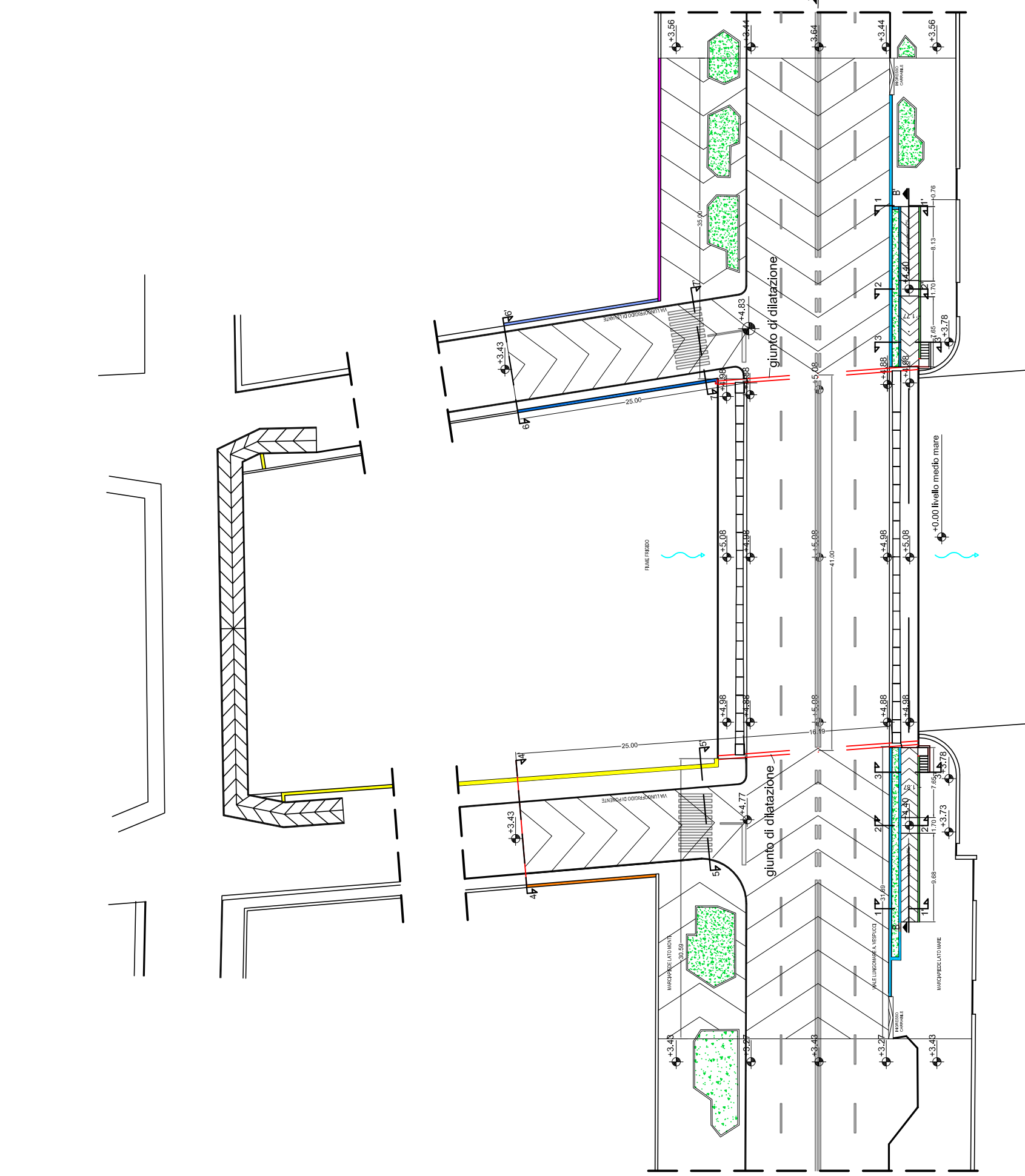
SEZIONE 6-6'



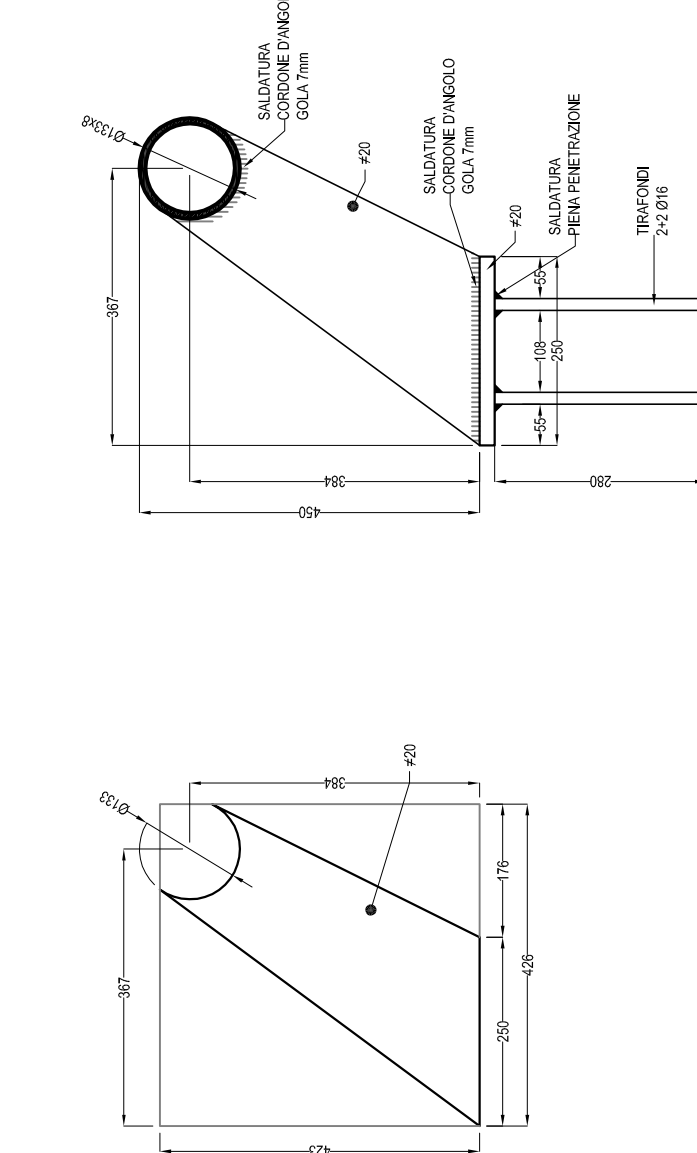
SEZIONE 7-7'



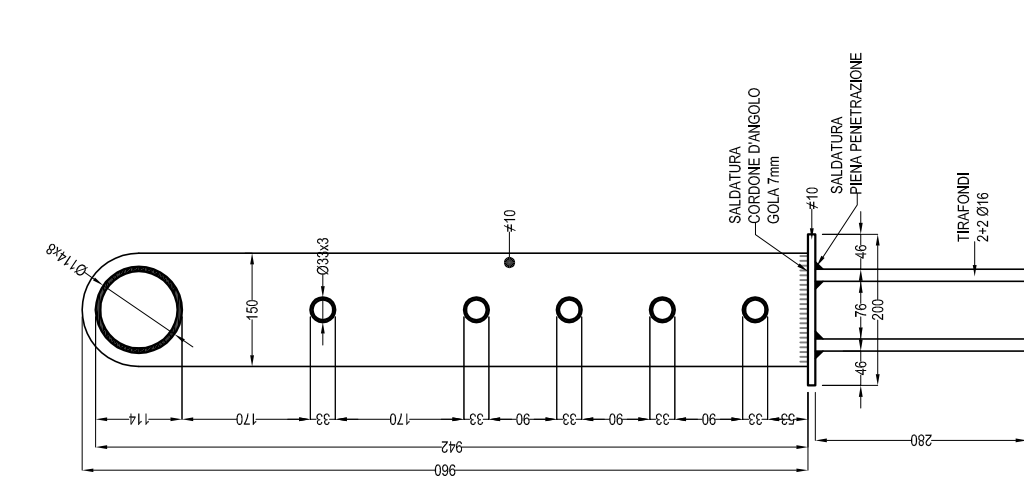
PIANTA scala 1:500



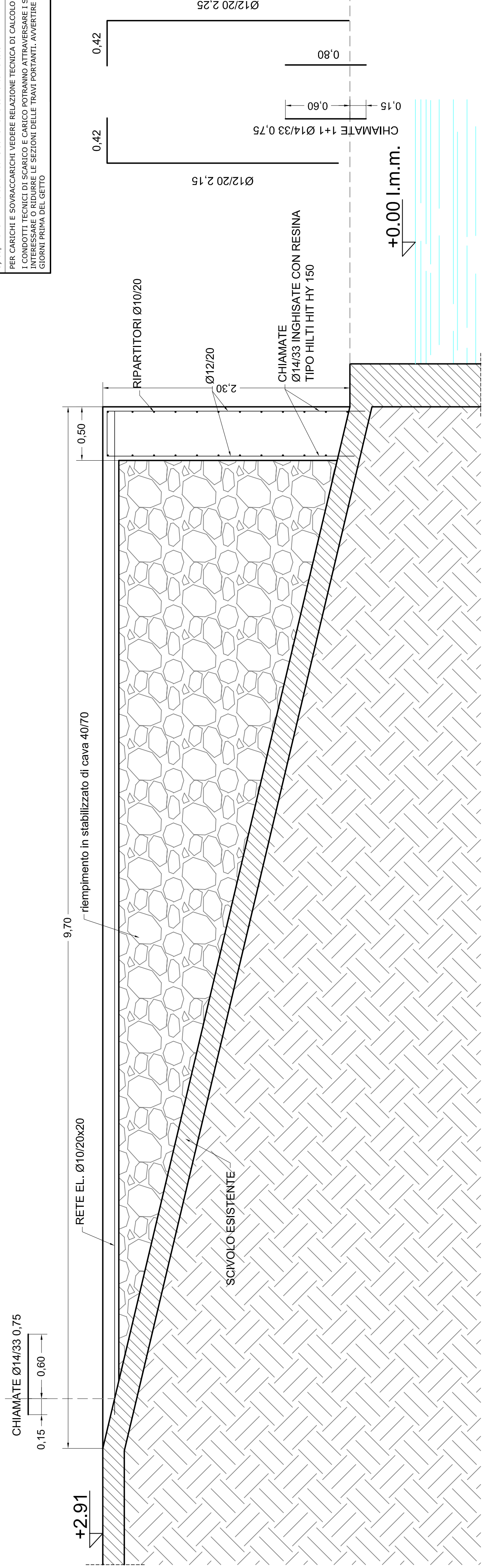
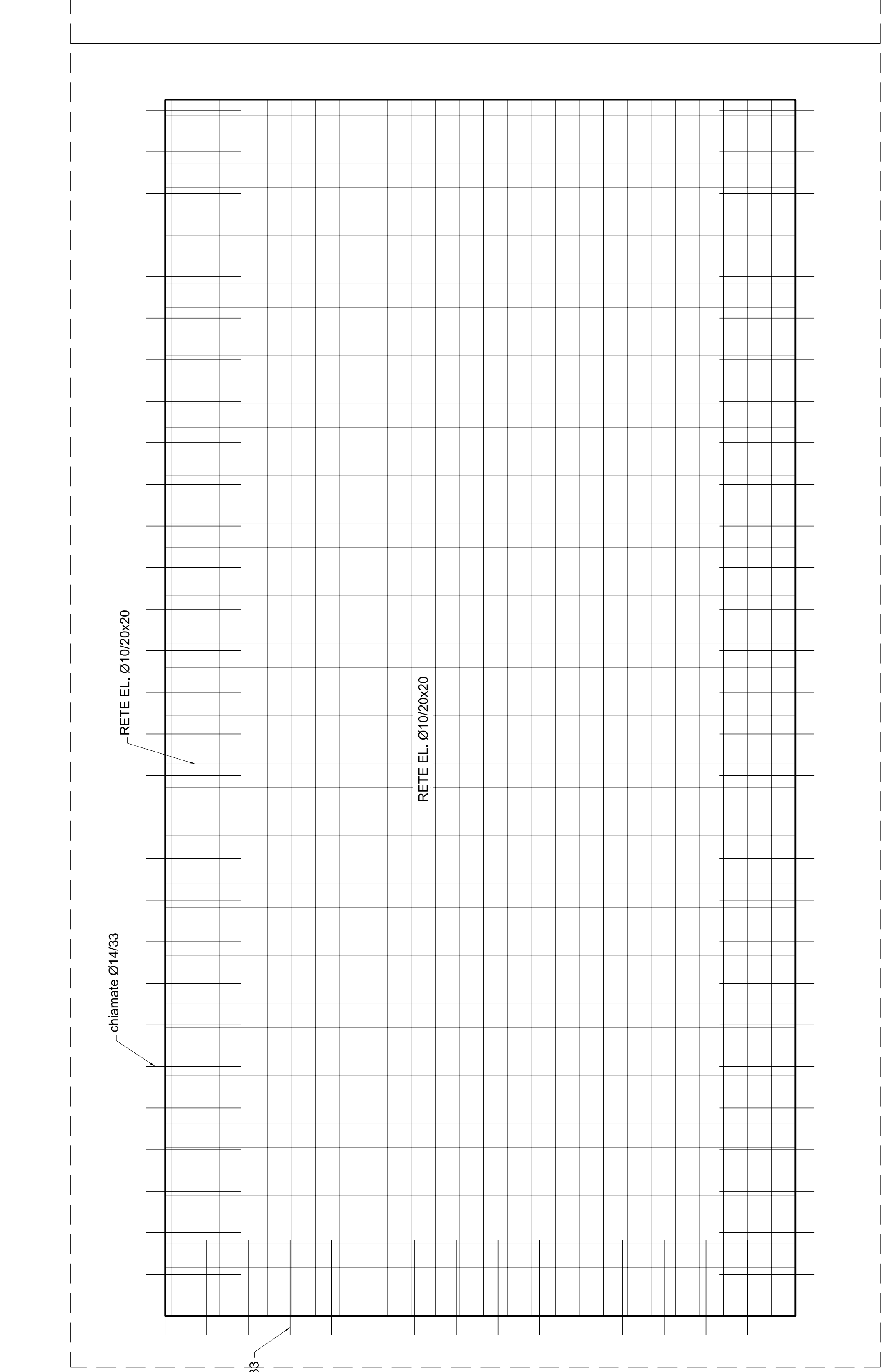
PARTICOLARE GUARDAVIA



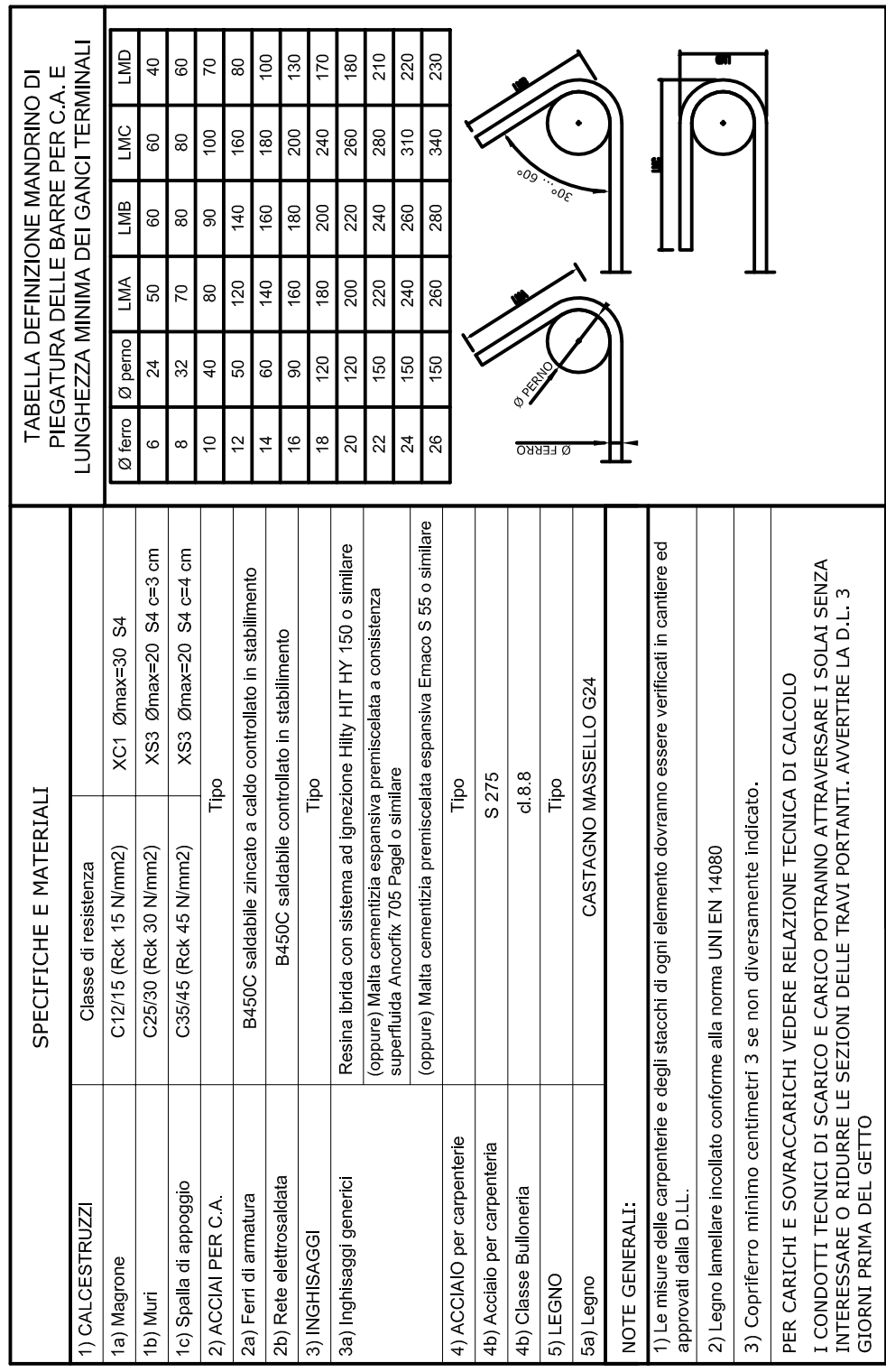
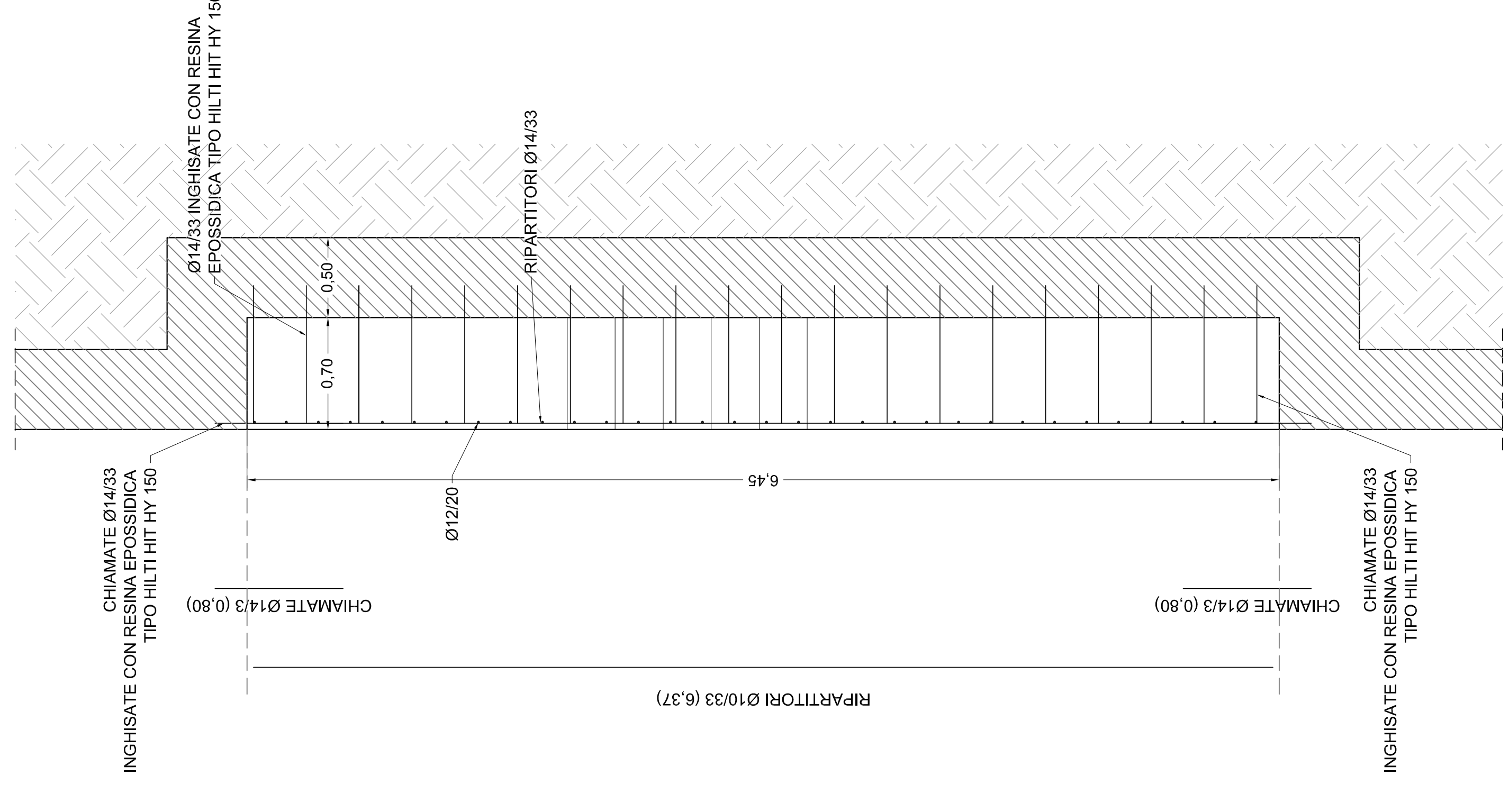
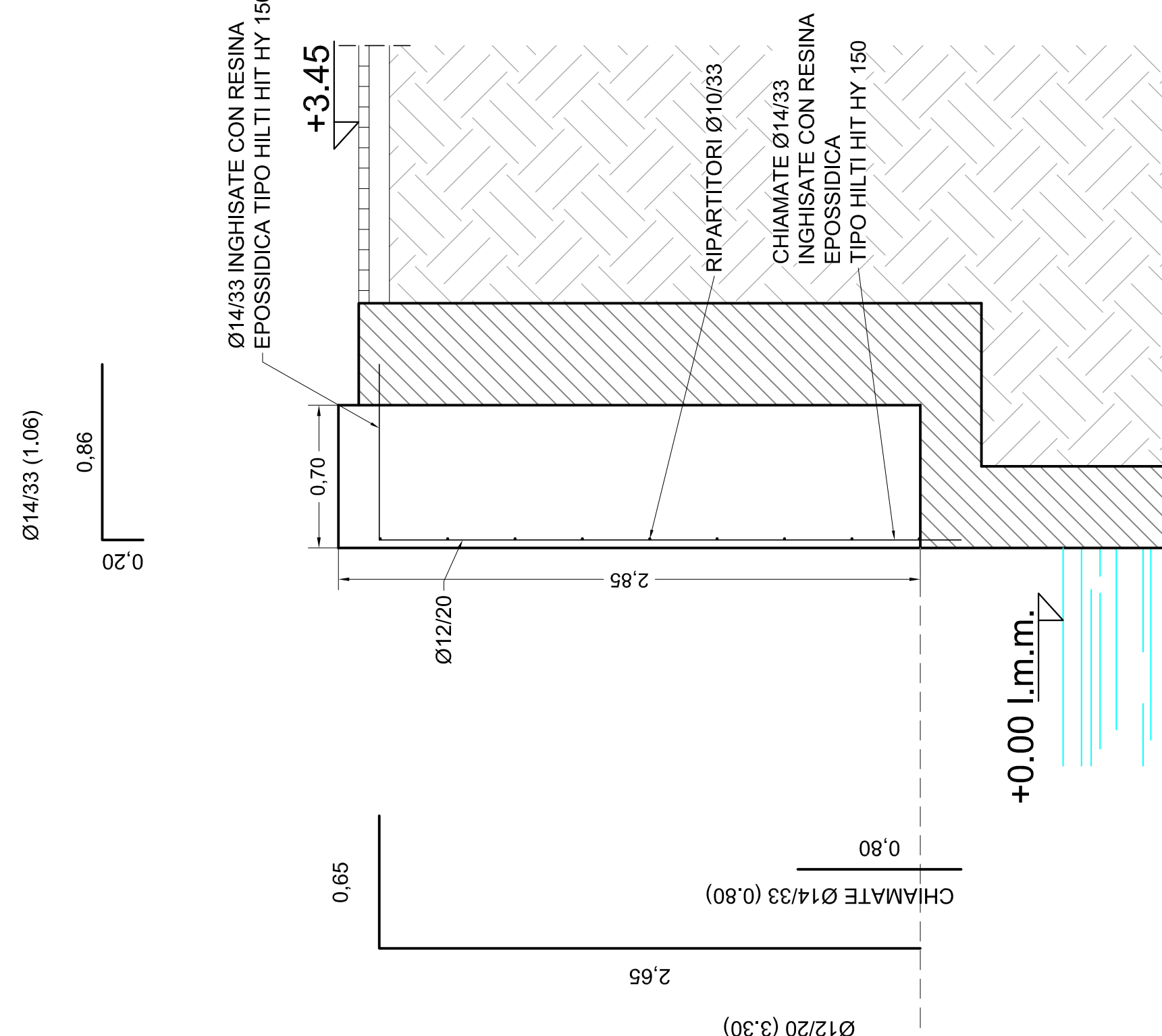
PARTICOLARE PARAPETTO RAMPE



PARTICOLARE RIEMPIMENTO RAMPA DI ACCESSO IN ALVEO E MURO DI CONTENIMENTO



RIEMPIMENTO NICCHIA SU SPALLA ARGINE DESTRO



REGIONE TOSCANA	
LAVORI SU PONTE Fiume FRIGIDO Lavori di rialzamento ponte sul Fgido viale Vespucci	
Resp. Un. Progettazione: Ing. Edoardo Giusti Ing. Gennaro Costabile	Progettista: Ing. Edoardo Giusti Ing. Gennaro Costabile Ing. Michele Baldati
Tavola 6	PROGETTO ESECUTIVO Pianimetria di progetto Sezioni rampe e muri d'argine e di contenimento Particolari guardavia e parapetto rampe
Data Gennaio 2017	Scala 1:500 1:25 1:10